



Heavy Duty Forklift

OUR SPECIALITY PROMOTE YOUR CAREER



Heavy Duty Forklift

OUR SPECIALITY PROMOTE YOUR CAREER



Advantages:

**Advanced design philosophy:** through scientific finite element analysis, kinematics and dynamics simulation analysis,base on the supporting of accurate data for the design, to ensure that reasonable door frame and chassis systems structure, excellent performance, stable and reliable operation of the machine.

**Advanced manufacturing processes:** frame uses GMAW welding, 100% non-damage detection for each key soldering, can withstand rigorous test, wholistic processing for the overall frame, high precision and very good bearing performance.

**Cost performance:** in the premise to ensure the stability and reliability of quality,the products are with higher cost performance in the industry.

**After-sale service:** our company has one professional maintenance service team, including practiced field engineers and senior technician, who can provide timely technical guide and solution for problems

**Product Quality:** in order to create brand on our early stage, enhancecorporate recognition and establish a corporate image, We follow the market and the user's awe, attention to detail, continuous improvement, diligently pursue excellence.

12-15 tonnage



Strong Lifting And Cross-Country Performance  
Advanced Design Philosophy

15-20 tonnage

High Cost Performance,High Rate Of Return  
3D finite element analysis



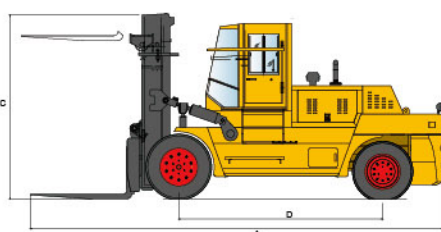
20-30 tonnage



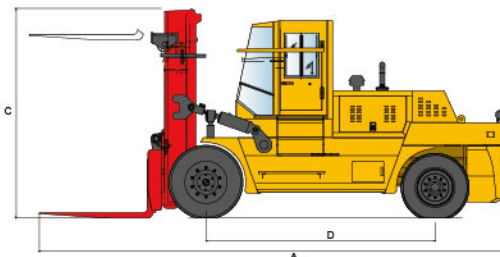
Stable and Reliable  
Damping Luxury Cab

30-40 tonnage

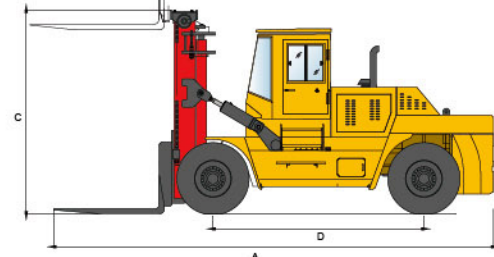
Excellent Operating Performance  
Exquisite workmanship &firm box-type frame



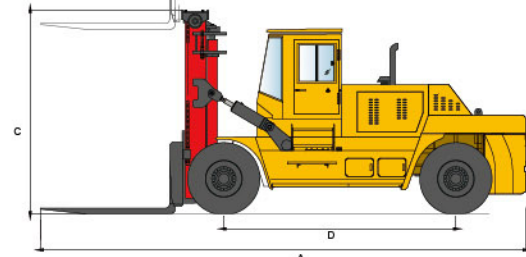
HNF-120



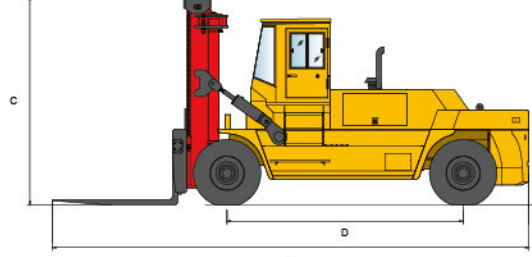
HNF-150 HNF-160



HNF-200

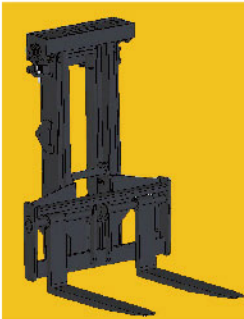
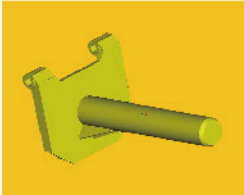
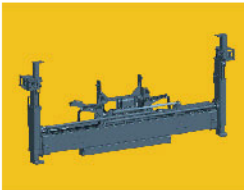


HNF-250



HNF-300 HNF-350

Attachments



| Configuration | Model                         |                     | CPCD120         | CPCD150         | CPCD160         | CPCD200         | CPCD250         | CPCD300         | CPCD350         |
|---------------|-------------------------------|---------------------|-----------------|-----------------|-----------------|-----------------|-----------------|-----------------|-----------------|
|               |                               |                     | HNF-120         | HNF-150         | HNF-160         | HNF-200         | HNF-250         | HNF-300         | HNF-350         |
| Performance   | Rated load                    | kg                  | 12000           | 15000           | 16000           | 20000           | 25000           | 30000           | 35000           |
|               | Load center                   | mm                  | 600             | 900             | 900             | 900             | 1250            | 1250            | 1250            |
|               | Free lift                     | mm                  | 230             | 180             | 180             | 180             | 180             | 180             | 180             |
|               | Mast tilt angle (front/rear)  | o                   | 6 / 12          | 6 / 12          | 6 / 12          | 6 / 12          | 6 / 12          | 6 / 12          | 6 / 12          |
|               | Overall dimensions            | A Length            | 6055            | 7645            | 7645            | 8340            | 9190            | 9690            | 9700            |
|               |                               | B Width             | 2250            | 2750            | 2750            | 3050            | 3050            | 3200            | 3320            |
|               |                               | C Height            | 3090            | 3625            | 3625            | 3860            | 3860            | 4250            | 4310            |
|               |                               | Mast lifting height | 3000            | 3500            | 3500            | 3500            | 3500            | 3500            | 3500            |
|               | Fork size (L*W*H)             | mm                  | 1200X180X90     | 1800X180X90     | 1800X180X90     | 2000X260X100    | 2440X280X110    | 2440X320X110    | 2440X340X125    |
|               | Min. turning radius           | mm                  | 4450            | 5800            | 5800            | 6250            | 6700            | 7260            | 7260            |
| Tyre          | Max. travel speed (with load) | Km/h                | 26              | 30              | 30              | 28              | 28              | 28              | 28              |
|               | Lifting speed (with load)     | mm/s                | 310             | 300             | 300             | 180             | 180             | 260             | 260             |
|               | Gradeability (with load)      | %                   | 25              | 20              | 20              | 20              | 20              | 20              | 20              |
|               | Weight                        | Kg                  | 18000           | 22000           | 23000           | 32000           | 35000           | 39500           | 43000           |
|               | Front                         |                     | 4X10.00-20-16PR | 4X12.00-24/18PR | 4X12.00-24/18PR | 4X14.00-24/24PR | 4X14.00-24/28PR | 4X14.00-24/28PR | 4X16.00-25/32PR |
|               | Rear                          |                     | 2X10.00-20-16PR | 2X12.00-20/18PR | 2X12.00-20/18PR | 2X14.00-24/24PR | 2X14.00-24/28PR | 2X14.00-24/28PR | 2X16.00-25/32PR |
| Engine        | Wheel tread                   | Front               | mm              | 1677            | 2060            | 2060            | 2200            | 2200            | 2420            |
|               |                               | Rear                | mm              | 2013            | 2330            | 2330            | 2390            | 2390            | 2450            |
|               | D Wheelbase                   | mm                  | 3000            | 3800            | 3800            | 4000            | 4400            | 4800            | 4800            |
|               | Min. ground clearance         | mm                  | 225             | 265             | 250             | 250             | 250             | 350             | 350             |
|               | Model                         |                     | 6BT5.9-C130     | 6BTAA5.9-C190   | 6BTAA5.9-C190   | 6CTA8.3-C215    | 6CTA8.3-C240    | 6CTAA8.3-C260   | 6CTAA8.3-C260   |
|               | Rated power/rotate speed      | KW/r.pm             | 97/2200         | 142/2200        | 142/2200        | 160/2200        | 179/2200        | 191/2200        | 191/2200        |
|               | Max. torque/rotate speed      | N.m/r.pm            | 560/1500        | 800/1500        | 800/1500        | 908/1500        | 1029/1500       | 1025/1400       | 1135/1500       |

Note: the above data are subject to change without prior notice.